



MADE IN JAPAN



ELEMAX

Power of Next Generation

SAWAFUJI ELECTRIC CO., LTD.

PRODUCTS

Compact Diesel Type(5.5 - 10.2kVA)

Diesel Generators

SHX8000Di (7.0kVA) SHX12000Di (10.2kVA)



SHX8000Di		SHX12000Di	
Rated Output 7.0 kVA (50/60Hz)	Fuel Consumption 1.6 l/h (50% Load)	Rated Output 10.2 kVA (50/60Hz)	Fuel Consumption 2.3 l/h (50% Load)

FEATURES

- High Performance Diesel Engine

Yanmar 2TNV70-ASG Compliant with EPA TIER 4 FINAL
Variable 2300 - 3400 rpm contributes to reduced fuel consumption and minimizing noise levels

- SPECIAL INVERTER for Pure Sine Wave Output ¹

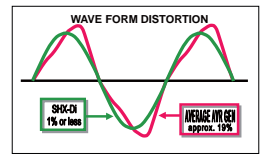
High quality, pure sine wave electrical output is ideal for sensitive equipment like PC and TVs.

- SAWAFUJI PMA (Permanent Magnet Alternator) ²

The PMA incorporates SAWAFUJI's state of the art winding technology and is 60% smaller than conventional alternators.

- SMART Multi LED Display ³

Shows rpm, cumulative running hours, and error messages for self-diagnostics.



*1: Inverter



*2: PMA



*3: Control Panel

SH07D (5.5 - 6.5kVA)



FEATURES

- Best-in-the-industry Engine

Kubota Z482 (SH07D) / D722 (SH11D)
The life of the genset is second to none with sufficient power exceeding your expectations.

- Emergency Auto Shutdown

Stops the engine automatically when it lacks enough oil or if water temperature overheats or output terminal cover is opened..

- Connectable with ATS (Automatic Transfer Switch)

When connected with ATS, the generator auto-starts when the utility power fails.

SH07D			SH11D		
Rated Output 5.5 kVA (50Hz)	Rated Output 6.5 kVA (60Hz)	Fuel Consumption 2.4 l/h (50Hz 100% Load)	Rated Output 6.5 kVA (50Hz)	Rated Output 10 kVA (60Hz)	Fuel Consumption 3.2 l/h (50Hz 100% Load)



Type R



Type LD

LINE UP SH07D/SH11D

Heavy Duty Gasoline Type(8.5 - 11.8kVA)

Gasoline Generators

SH11000 (8.5 - 9.5kVA)



FEATURES

- Powerful Gasoline Engine

Honda GX630 15.1kW Air-Cooled OHV V-TWIN Engine

- Control Panel

Easy to see and easy operation.
Standard features:V-meter, Hour-meter, Pilot Lamp

LINE UP SH11000/SHT11500

SH11000		SH11500	
Rated Output 8.5 kVA (50Hz)	Rated Output 9.5 kVA (60Hz)	Rated Output 10 kVA (50Hz)	Rated Output 11.5 kVA (60Hz)
Continuous Operating Hours 7 h (50Hz)	Continuous Operating Hours 7 h (50Hz)	Continuous Operating Hours 7 h (50Hz)	Three Phase 3



Single Phase



Three Phase

Heavy Duty Diesel Type (12 - 22kVA)

SPEC. 5P

SH15D (12 - 13kVA)



LINE UP SH15D/SHT15D/SHT17D

SH15D		SHT15D/SHT17D	
Rated Output 12 kVA (50Hz)	Rated Output 13 kVA (60Hz)	Rated Output 15 kVA (50Hz)	Rated Output 16.3 kVA (60Hz)
Fuel Consumption 4.9 l/h (100% Load)	Fuel Consumption 4.8 l/h (50Hz 100% Load)	Three Phase 3	

FEATURES

-High Performance Diesel Engine ^{*1}

Kubota D1005
Vertical water-cooled,4-cycle diesel engine
The D1005 diesel engines ensure greater power,more efficient combustion,and cleaner emissions.

-Control Panel ^{*2}

Easy to see and easy operation.

-Automatic Air Bleeding

This system reduces troublesome maintenance procedures by automatically removing air from the fuel line.

-Safety System

Emergency unit detects abnormally low oil pressure or high coolant temperature and stops engine automatically to prevent damage.

-Large Capacity Fuel Tank

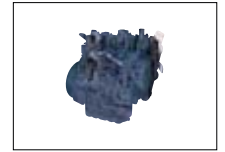
The larger capacity fuel tank enables longer periods of continuous operation.

-One Side Maintenance

Oil,fuel,water,and filters are all located on one side for easy maintenance.

-ATS(AMF)Terminals

ATS terminals are standard equipment.



*1: Kubota D1005



*2: Control Panel

SHT25D (20 - 22kVA)



LINE UP SH20D/SHT25D

FEATURES

- High Performance Diesel Engine ^{*3}

Kubota V2203-B

- Brushless Alternator STAMFORD PI144D

- Control Panel ^{*4}

- Automatic Air Bleeding

- Safety System

- Large Capacity Fuel Tank

- One Side Maintenance

- ATS(AMF) Terminals

SH20D		SHT25D	
Rated Output 19 kVA (60Hz)	Fuel Consumption 6.6 l/h (100% Load)	Rated Output 20 kVA (50Hz)	Rated Output 22 kVA (60Hz)
Fuel Consumption 5.4 l/h (50Hz 100% Load)		Three Phase 3	



*3: Kubota V2203-B



*4: Control Panel

SPEC. 6P

SH13000 (10 - 11.8kVA)



FEATURES

- More Powerful Gasoline Engine

Robin EH72-2DS 17.2kW Air-Cooled OHV V-TWIN Engine

- Control Panel

Easy to see and easy operation.

Standard features:

V-meter, Hour-meter, Pilot Lamp

LINE UP SH13000/SHT15000

SH13000		SHT15000	
Rated Output 10 kVA (50Hz)	Continuous Operating Hours 5.5 h (50Hz)	Rated Output 12 kVA (50Hz)	Continuous Operating Hours 5.5 h (50Hz)
Three Phase 3			



Single Phase



Three Phase

PRODUCTS

EX Series(2.2 - 6.5kVA)

Gasoline Generators

SPEC. 5P

SH3200EX



Rated Output
2.2 kVA
(50Hz)

Rated Output
2.5 kVA
(60Hz)

Continuous
Operating Hours
14 h
(50Hz)

FEATURES

- Honda OHV 4-stroke Engine

Provides high power, outstanding fuel economy. Fuel consumption is nearly 30% less than comparable side-valve engines.

- Automatic Voltage Regulator(AVR)

ELEMAX's AVR smooths power output fluctuations to enable operation of sensitive electronic equipment.

- Large Fuel Tank

17 liter fuel tank for SH3200EX, SH3900EX and 28 liter fuel tank for upper model realize exceptionally long operating hours.

- 10% to 25% Increased Output Power Compared to DX series^{*1}

Rated output power has been increased from 10 to 25% compared to DX series. This power up is provided by newly designed Sawafuji square core alternator.

- New Designed Control Panel^{*2}

Not only new attractive outlook design, safety and water resistance are also improved.

- Improved Frame Designe

Welded upper bar and widen diameter of the frame pipe are significantly improved the outlook image and protect the machine from rough handling and damage.

SH7600EXS



Rated Output
5.6 kVA
(50Hz)

Rated Output
6.5 kVA
(60Hz)

Continuous
Operating Hours
8.5 h
(50Hz)



LINE UP SH3200EX/SH3900EX/SH4600EX/
SH5300EX/SH6500EX(S)/SH7600EX(S)

STANDARD Series(1.3 - 4.5kVA)

Gasoline Generators

SPEC. 6P

SH2900

LINE UP

SH1900
SH2900
SH4000
SH5000
SH6000

Rated Output
2.0 kVA
(50Hz)

Rated Output
2.3 kVA
(60Hz)

Continuous
Operating Hours
3.7 h
(50Hz)



FEATURES

- Honda OHV 4-stroke Engine
- Saddle type Control Box with 2 AC Outlets
- Compact, Light Weight and Solid

WELDER Generator (140A 26V)

Gasoline Generators

SPEC. 6P

SHW190

Generator
2.0 kVA
(50Hz)

Welder (DC)
140A/26V

Continuous
Operating Hours
6.2 h
(50Hz)



FEATURES

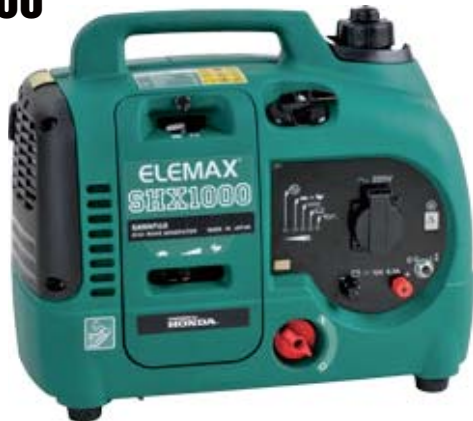
- Honda OHV 4-stroke Engine
- 190amps Maximum DC Power for Welding
- 17 liter Large Capacity Fuel Tank with Fuel Gauge
- Compact and Light Weight
- Stable-Arc 6-Phase Half Wave Current for Welding

SHX Series(900 - 1500W)

Portable Gasoline Generators

SPEC. 5P

SHX1000



Rated Output 900 W (50/60Hz)	Dry Weight 13.6 kg (R,S,L Type)	Continuous Operating Hours 8.6 h (1/2 load)
---	--	--

FEATURES

-Advanced Technology^{*3}

Newly designed Multi-pole Alternator and high speed engine dramatically reduced the size and weight.

-Honda 4-stroke Engine

Honda multi purpose engine has been industry standard for reliability and durability in the world. Also guaranteed with just a light pull on the recoil starter.

-Long Operating Hours

Large fuel tank allows efficient work without refueling.

-Portability

These models are especially easy to carry.

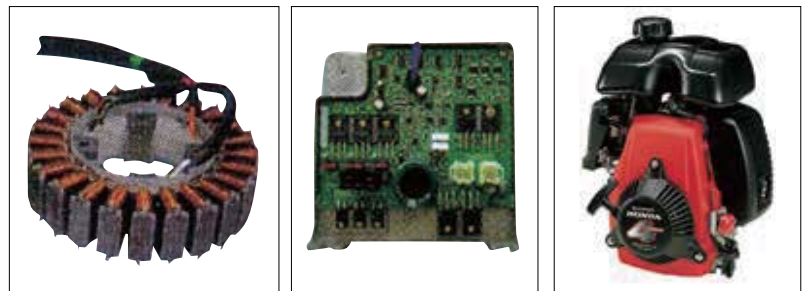
-Lower Sound Level(Silent and Power mode)

This unique designed silent mode for SHX1000 provides extremely lower sound level with 3/4 load. Just in case to take full load, only to change to Power mode.

-Compact & Light Weight

The SHX1000 weighs only 13.6kg, The SHX2000 weighs only 21kg, less than half of the weight of similar capacity conventional generator.

SHX2000



*3

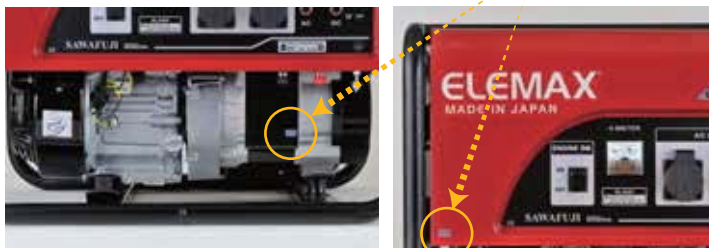
Rated Output 1500 W (50/60Hz)	Dry Weight 21 kg (R,S,L Type)	Continuous Operating Hours 7.0 h (1/2 load)
--	--	--



How to Authenticate ELEMEX Generators

Check Point 1 -TRUSTGRAM-

Make sure that the security label of "TRUSTGRAM" is put on the product body.



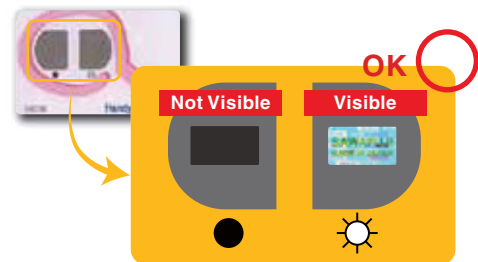
Without TRUSTGRAM...



Check Point 2 -HOLOGRAM-

2 -HOLOGRAM-

Make sure that the following change is visible through the "VIEWER"



Window	●	☀
OK	Not Visible	Visible
FAKE	Not Visible	Not Visible
FAKE	Visible	Visible
FAKE	Visible	Not Visible

SPECIFICATIONS

EX Series

Gasoline Generators				3P FEATURES							
Models				SH3200EX	SH3900EX	SH4600EX	SH5300EX	SH6500EX	SH7600EX		
Type				R-type: 220V(50Hz), S-type: 220V(60Hz), D-type: 110/220V(60Hz), LD-type: 120/240V(60Hz)							
Generator				50, 60							
Frequency (Hz)				Self-Exciting, 2-pole, Field Rotating Type							
Type				AVR							
Voltage Regulation System				Single							
Phase				Single							
AC Output (KVA)				Rated Power (KVA)	50Hz	2.2	2.8	3.2	3.8	5.0	5.6
				60Hz	2.5	3.2	3.8	4.4	5.6	6.5	
				Maximum Power (KVA)	50Hz	2.6	3.3	4.0	4.7	5.8	6.5
				60Hz	3.2	3.9	4.6	5.3	6.5	7.6	
Rated Voltage (V)				R:220(50Hz), S:220(60Hz), D:110/220(60Hz), LD:120/240(60Hz)							
DC Output (V-A)				12V-8.3A							
Rated Power Factor (cos)				1.0							
Engine				Honda							
Maker				Honda							
Models				GX160	GX200	GX240	GX270	GX340	GX390		
Displacement (CC)				163	196	270	270	389	389		
Net Power (kW)				3.600rpm	3.6	4.1	5.9	6.3	8.0	8.7	
Ignition System				Transistor							
Oil Alert System				YES							
Starting System				Recoil							
L x W x H (mm)				623 X 435 X 491			708 X 548 X 493				
Dry Weight (kg)				44	46	63	68	75	78		
Fuel Tank Capacity (litres)				17			28				
Sound Level (dB) [dB(A)/7m]				50Hz	64	65	63	70	71	73	
				60Hz	68	69	71	72	75	76	
Continuous Operating Hours (h)				50Hz	14	10	14	12	10	8.5	
				60Hz	12	8.8	11	10	7.9	7.2	

SHX Series

Portable Gasoline Generators				4P FEATURES									
Models				SHX 1000				SHX 2000					
Type				R	G	S	L	R	G	S	L		
Generator				50				60					
Frequency (Hz)				5800/4100(Power Mode/Silent Mode)				4500					
Engine Speed (rpm)				5800/4100(Power Mode/Silent Mode)				4500					
Waveform				Square-Wave									
AC Output				1000				1900		1700		1900	
				900				1500					
				220	230	220	120	220	230	220	120		
DC Output				Only for Charging 12V Automotive Batteries.									
				Maximum Charging Output = 8.3/4.2 A(Power Mode/Silent Mode)				Maximum charging output = 8.3A					
Insulation Class				B									
Engine				Honda									
Maker				Honda									
Models				GXH50				GX100					
Type				Air Cooled OHV 4-stroke Gasoline				Air Cooled OHC 4-stroke Gasoline					
Displacement (CC)				49.4				98.5					
L x W x H (mm)				465 x 265 x 380				560 x 340 x 415					
Dry Weight (kg)				13.6	14.0	13.6	13.6	21.0	22.0	21.0	21.0		
Fuel Tank Capacity(litres)				3.8				7.7					
Sound Level				58(1/2 load)				63(1/2 load)					
				89(3/4 load)				93(3/4 load)					
Continuous Operable Hours				5.5(rated load) 8.6(1/2 load)				7					
Pilot Lamp				LED				LED					
Power Indicator				LED				LED					
Oil Alert System				YES				YES					
Engine Stop				Interlocking with Fuel Cock				Rocker Switch					
AC				Output Plug Socket x 1				Control Circuit Plug Socket x 2					
Protective Device				Terminal				Thermal Type Circuit Breaker					
DC				Output Plug Socket x 1				Control Circuit Plug Socket x 2					
Protective Device				Terminal				Thermal Type Circuit Breaker					

HEAVY DUTY Type

Diesel Generators				1-2P FEATURES									
Models				SH07D	SH11D	SH15D	SHT15D	SHT17D	SH20D	SHT25D			
Type				R	LD	R	LD	R	D	R	S		
Generator				50	60	50	60	50	60	50	60		
Frequency (Hz)				Self-exciting, 2-pole, Field Rotating Type									
Type				Self-exciting, 4-pole, brushless, Field Rotating Type									
Phase				Single		Three		Single		Three			
Voltage Regulation System				AVR				AVR					
AC Output				Rated Power (KVA)	50Hz	5.5	8.0	12	15	-	20		
				60Hz	6.5	10.0	13	16.3	19	22			
				Rated Voltage (V)	220	120/240	220	120/240	Single Phase : 220	120/240	Single Phase : 220	Three Phase : 380	
Rated Power Factor (cos)				1.0		1.0		0.8		1.0			
Engine				Kubota									
Maker				Kubota									
Models				Z482	D722	D1005	V2203-B						
Displacement (CC)				479	719	1001	2197						
Maximum Horse Power (PS)				8.1(3,600rpm)	12.2(3,600rpm)	26(3,600rpm)	32.2(1,800rpm)						
Starting System				Electric Starter									
L x W x H (mm)				1066 x 618 x 698	1281 x 618 x 698	1474 x 698 x 869	1660 x 690 x 900						
Dry Weight (Kg)				235	295	387	540						
Fuel Tank Capacity (liters)				28		53		72					
Sound Level				50Hz	66.5	-	68.0	-	68.0	-	66.0	-	
				60Hz	-	67.5	-	69.0	-	71.0	-	71.0	
Continuous Operating Hours (h)				50Hz	15.6	-	11.2	-	10.8	-	11.8	-	17.6
				60Hz	-	13.3	-	8.5	-	9.0	-	15.2	
Volt Meter				YES									
Ampere Meter				NO		YES		NO		YES			
Hour Meter				YES									
Warning Lights				YES		Indicator Lights (4-conditions)							
Output				R: Plug Socket x 2, LD: Plug Socket x 3		Plug Socket x 2		Terminal & Socket		Terminal			
ATS Terminals				YES									

SHX Series

Diesel Generators				1P FEATURES			
Models				SHX8000Di	SHX12000Di		
Type				R	LD	R	LD
Frequency (Hz)				50	60	50	60
Generator				Permanent Magnet, Multi-Pole Alternator			
Phase				Single			
Voltage Regulation System				Inverter			
Waveform				Pure Sine wave			
Output				Maximum power (KVA/KW)	7.5	11.0	
				Rated power (KVA/KW)	7.0	10.2	
Voltage(V)				220	120/240	220	120/240
Current (A)				31.8	2 x 31.8-31.8	46.4	2 x 46.4-46.4
Rated Power Factor (cos)				1.0			
Engine				YANMAR			
Maker				YANMAR			
Model				2TNV70-ASG	3TNM68-ASG		
Displacement (L)				0.570	0.784		
Rated output (kW/rpm)				9.3/3600	13.8/3600		
Engine speed(r rpm)				2300 - 3400, Variable			
Starting System				Electric Starter			
Fuel				Diesel Fuel (BS2869A1 or equivalent)			
Battery (5HR)				12 - 36 (46B24L or 55B24L)	12 - 36 (46B24L)		
L x W x H (mm)				1080 x 647 x 686	1184 x 670 x 770		
Dry Weight (kg)				257	278		
Fuel Tank Capacity				30.0	40.7		
Sound Level				25% load	63.5	64.0	
				75% load	65.5	66.0	
				100% load	67.5	68.0	
Fuel consumption (litres)				25% load	1.1	1.6	
				50% load	1.6	2.3	
				75% load	2.2	3.2	
				100% load	3.0	4.3	
Volt Meter				YES			
Hour Meter				YES (LED Display)			
Warning Lights				YES (LED Display)			
Output				R Type: Plug Socket x 3, LD Type: Plug Socket x 5			
ATS Terminal				YES			

HEAVY DUTY Type

Gasoline Generators				1-2P FEATURES							
Models				SH11000		SHT11500		SH13000		SHT15000	
Type				R	LD	R	S	R	LD	R	
Generator	Frequency (Hz)			50	60	50	60	50	60	50	
	Type			Self-exciting, 2-pole, Field Rotating Type							
	Voltage Regulation System			AVR							
	Phase			Single		Three		Single		Three	
	AC Output (KVA)	Rated Power (KVA)	50Hz	8.5	-	10.0	-	10.0	-	12.0	
		Maximum Power (KVA)	60Hz	-	9.5	-	11.5	-	11.8	-	
			50Hz	10.0	-	11.5	-	11.0	-	-	
Rated Voltage (V)	60Hz	-	11.0	-	13.0	-	13.0	-	13.2		
Rated Power Factor (cos)			1.0		0.8		1.0		0.8		
Engine	Maker			Honda				Robin			
	Models			GX630				EH72-2DS			
	Displacement (CC)			688				720			
	Net Power (kW)			15.1				17.2			
	Ignition System			Transistor							
	Oil Alert System			YES							
Others	Starting System			Electric Starter							
	L x W x H (mm)			924 x 665 x 636/804 (with wheel)							
	Dry Weight (kg)	without wheel			158				175		
		with wheel			165				183		
	Fuel Tank Capacity (liters)			38							
	Sound Level [dB(A)/7m]	50Hz			74				76.0		76.0
60Hz			-				-		78.0		
Continuous Operating Hours (h)	50Hz			7.0		-		5.5		5.5	
	60Hz			-		6.2		-		4.5	
Cooling System			Forced Air								
Engine Oil Refill Capacity (liters)			1.8 (with filter replaced) / 1.5 (without filter replaced)				1.55L (inclusive of those in oil filter)				

STANDARD Series

Gasoline Generators				3P FEATURES					
Models				SH 1900	SH 2900	SH 4000	SH 5000	SH 6000	
Type				R-type; 220V(50Hz), S-type; 220V(60Hz), L-type; 120V(60Hz)					
Generator	Frequency (Hz)			50, 60					
	Type			Self-Exciting, 2-pole, Field Rotating Type					
	Voltage Regulation System			AVR					
	Phase			Single					
	AC Output (KVA)	Rated Power (KVA)	50Hz	1.3	2.0	2.7	3.2	4.0	
		Maximum Power (KVA)	60Hz	1.5	2.3	3.0	3.6	4.5	
			50Hz	1.6	2.4	3.7	4.5	5.5	
Rated Voltage (V)	60Hz	1.9	2.9	4.1	5.0	6.0			
Rated Power Factor (cos)			1.0						
Engine	Maker			Honda					
	Models			GX120	GX160	GX240	GX270	GX340	
	Displacement (CC)			118	163	270	270	389	
	Net Power (kW)			3,600rpm	2.6	3.6	5.9	6.3	8.0
	Ignition System			Transistor					
	Oil Alert System			YES					
Others	Starting System			Recoil					
	L x W x H (mm)			560 x 422 x 422		605 x 495 x 490		605 x 511 x 490	
	Dry Weight (kg)	29			34		51		54
		2.5			3.6		6.0		6.5
	Fuel Tank Capacity (liters)			69		70		72	73
	Sound Level [dB(A)/7m]	50Hz			71		72		74
60Hz			71		72		75		
Continuous Operating Hours (h)	50Hz			3.1		3.7		3.3	
	60Hz			2.1		2.5		2.3	

WELDER Generator

*1 : Only R,S type
*2 : only Electric starter type

Gasoline Welder Generator				3-4P FEATURES			
Models				SHW190			
Type				R	S	L	
Generator	Frequency (Hz)			50	60		
	Type			2-pole, Field Rotating Type			
	Phase			Single			
	AC Output (KVA)	Rated Power (KVA)	50Hz	2.0	-	4.0	
		Rated Voltage (V)	60Hz	-	3.0	110	
Rated Power Factor (cos)			1.0				
Welder	Type			2-pole, Field Rotating Type			
	Rectifier Type			Six Phase Half Wave Rectifier			
	Rated Output			3,600rpm	140A 26V		
	Current Control Range (A)			50 - 190			
	Rated Duty Cycle (%)			50			
	Welding Rod			2.6 to 5.0 mm dia.			
Engine	Maker			Honda			
	Models			GX390			
	Displacement (CC)			389			
	Net Power (kW)			3,600rpm	8.7		
	Ignition System			Transistor			
	Oil Alert System			YES			
Others	Starting System			Recoil (OP;Electric)			
	L x W x H (mm)			679 x 511 x 490			
	Dry Weight (kg)			88			
	Fuel Tank Capacity (liters)			17			
	Sound Level [dB(A)/7m]	50Hz			73		
		60Hz			75		
Continuous Operating Hours (h)	50Hz			6.2			
	60Hz			5.2			

Standard Accessory	Portable Gasoline Generators				Gasoline Generators				WELDER
	SHX Series		EX Series		SHW190				
	SHX1000	SHX2000	SH3200EX	SH3900EX	SH4600EX	SH5300EX	SH6500EX	SH7600EX	SHW190
Owner's Manual	○	○	○	○	○	○	○	○	○
Plug	*1	*1	○	○	○	○	○	○	○
Spark plug	-	-	○	○	○	○	○	○	○
Wrench	○	○	○	○	○	○	○	○	○
Tool kit	-	-	-	-	-	-	-	-	-
Slow Blow Fuse	-	-	-	-	-	-	-	-	-
Battery	-	-	-	-	-	-	-	-	-
Band hook for battery	-	-	-	-	-	-	*2	*2	*2
Optional Equipment	SHX1000	SHX2000	SH3200EX	SH3900EX	SH4600EX	SH5300EX	SH6500EX	SH7600EX	SHW190
Electric Starter	-	-	-	-	-	-	○	○	○
4-wheel kit	-	-	-	-	-	○	○	○	○

Standard Accessory	Gasoline Generators								
	STANDARD Series				HEAVY DUTY Type				
	SH1900	SH2900	SH4000	SH5000	SH6000	SH11000	SHT11500	SH13000	SHT15000
Owner's Manual	○	○	○	○	○	○	○	○	○
Plug	○	○	○	○	○	○	○	○	○
Spark plug	○	○	○	○	○	○	○	○	○
Wrench	○	○	○	○	○	○	○	○	○
Tool kit	-	-	-	-	-	-	-	-	-
Slow Blow Fuse	-	-	-	-	-	-	-	-	-
Battery	-	-	-	-	-	○	○	○	○
Band hook for battery	-	-	-	-	-	○	○	○	○
Optional Equipment	SH1900	SH2900	SH4000	SH5000	SH6000	SH11000	SHT11500	SH13000	SHT15000
Electric Starter	-	-	-	-	-	STD	STD	STD	STD
4-wheel kit	-	-	-	-	-	STD	STD	STD	STD

Standard Accessory	Diesel Generators								
	HEAVY DUTY Type								
	SH07D	SH11D	SHX8000Di	SHX12000Di	SH15D	SHT15D	SHT17D	SH20D	SHT25D
Owner's Manual	○	○	○	○	○	○	○	○	○
Plug	○	○	○	○	○	○	○	○	○
Spark plug	-	-	-	-	-	○	○	○	○
Wrench	○	○	○	○	○	○	○	○	○
Tool kit	-	-	-	-	-	-	-	-	-
Slow Blow Fuse	○	○	○	○	○	○	○	○	○
Battery	○	○	○	○	○	○	○	○	○
Band hook for battery	○	○	○	○	-	-	-	-	-
Optional Equipment	SH07D	SH11D	SHX8000Di	SHX12000Di	SH15D	SHT15D	SHT17D	SH20D	SHT25D
Electric Starter	STD	STD	STD	STD	STD	STD	STD	STD	STD
4-wheel kit	-	-	-	-	OPT	OPT	OPT	-	-



SAWAFUJI GENERATORS
Proudly Made in Japan

SAWAFUJI ELECTRIC CO., LTD.

3, Nittahayakawa-cho, Ota-City,
Gunma 370-0344 JAPAN
PHONE: +81-276-56-7139
FAX: +81-276-56-6075
URL: <http://www.elemax.jp>

